

# ANA - QUICK FITTINGS PA6, ISO



Trade size	mm	7,5	10	10	12	17	23	29	37	50	50
Fittings	ISO	M10	M12	M16	M16	M20	M25	M32	M40	M50	M63
	PG	7	9	-	11	16	21	29	36	48	-



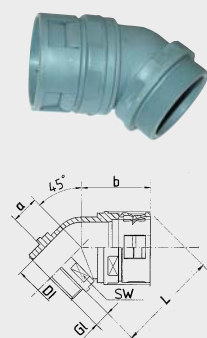
## ISO straight fitting, male, IP 65



ISO thread size		M10x1,0	M12x1,5	M16x1,5	M16x1,5	M20x1,5	M25x1,5	M32x1,5	M40x1,5	M50x1,5	M63x1,5
For Ana-Quick	NW	7,5	10	10	12	17	23	29	37	50	50
Bore (DI)	mm	7,4	8,4	11,0	12,4	16,0	20,5	26,6	34,0	42,5	50,0
Dimensions in mm	GL	9	9	9	9	13	14	14	15	15	15
	SW	14	19	19	21	27	36	40	50	65	65
	L	26	30	29	31	39	44	46	54	58	61
Standard pack.	pcs.	50	50	50	50	50	50	25	25	10	5
Article No. grey		803.010.0	803.012.0	803.016.1	803.016.0	803.020.0	803.025.0	803.032.0	803.040.0	803.050.0	803.063.0
Article No. black		803.110.0	803.112.0	803.116.1	803.116.0	803.120.0	803.125.0	803.132.0	803.140.0	803.150.0	803.163.0



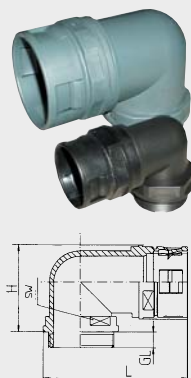
## ISO 45° elbow fitting, male, IP 65



ISO thread size		M10x1,0	M12x1,5	M16x1,5	M16x1,5	M20x1,5	M25x1,5	M32x1,5	M40x1,5	M50x1,5	M63x1,5
For Ana-Quick	NW	-	-	-	-	-	23	29	37	50	50
Bore (DI)	mm	-	-	-	-	-	20,5	26,5	33,0	42,5	48,0
Dimensions in mm	GL	-	-	-	-	-	15	14	16	16	16
	SW	-	-	-	-	-	36	40	50	65	65
	L	-	-	-	-	-	64	74	86	95	99
Standard pack.	pcs.	-	-	-	-	-	50	25	25	10	5
Article No. grey		-	-	-	-	-	803.425.0	803.432.0	803.440.0	803.450.0	803.463.0
Article No. black		-	-	-	-	-	803.525.0	803.532.0	803.540.0	803.550.0	803.563.0



## ISO 90° elbow fitting, male, IP 65



ISO thread size		M10x1,0	M12x1,5	M16x1,5	M16x1,5	M20x1,5	M25x1,5	M32x1,5	M40x1,5	M50x1,5	M63x1,5
For Ana-Quick	NW	-	10	10	12	17	23	29	37	50	50
Bore (DI)	mm	-	8,2	10,3	12,2	15,7	20,2	27,0	33,6	44,0	48,0
Dimensions in mm	GL	-	9	9	8	10	15	14	15	16	16
	SW	-	19	19	21	27	36	40	50	65	65
	L	-	44	44	50	59	78	88	103	126	128
	H	-	27	27	30	35	44	52	66	82	85
Standard pack.	pcs.	-	50	50	50	50	50	25	25	10	5
Article No. grey		-	803.812.0	803.816.1	803.816.0	803.820.0	803.825.0	803.832.0	803.840.0	803.850.0	803.863.0
Article No. black		-	803.912.0	803.916.1	803.916.0	803.920.0	803.925.0	803.932.0	803.940.0	803.950.0	803.963.0

### ANA-QUICK fittings for Polyamide conduit

These IP 65 straight, 45° and 90° fittings have a temperature range of -40°C till +110°C. Material: PA6V0. The cable-hose-version has a temperature range of -20°C till +100°C. Material: PA6V2. In case of the cable-hose-fitting an IP 68 connection on the switchbox is possible. Not mentioned but also available is a straight male M12x1,5 for conduit NW 7,5. Anaconda ISO fittings are available from stock, for larger volumes please notice a delivery time of 3 till 4 weeks. Execution with NPT thread available on demand.

# ANA - QUICK FITTINGS PA6, ISO



Trade size	mm	7,5	10	10	12	17	23	29	37	50	50
Fittings	ISO	M10	M12	M16	M16	M20	M25	M32	M40	M50	M63
	PG	7	9	-	11	16	21	29	36	48	-



## ISO straight fitting, female, IP 65



ISO thread size		M10x1,0	M12x1,5	M16x1,5	M16x1,5	M20x1,5	M25x1,5	M32x1,5	M40x1,5	M50x1,5	M63x1,5
For Ana-Quick	NW	-	-	10	12	17	23	29	-	-	-
Bore (DI)	mm	-	-	9,6	9,6	13,6	16,8	21,2	-	-	-
Dimensions in mm	GL	-	-	20	23	29	39	44	-	-	-
	SW	-	-	19	21	27	36	40	-	-	-
	L	-	-	35	37	44	47	51	-	-	-
Standard pack.	pcs.	-	-	50	50	50	50	25	-	-	-
Article No. grey		-	-	803.216.1	803.216.0	803.220.0	803.225.0	803.232.0	-	-	-
Article No. black		-	-	803.316.1	803.316.0	803.320.0	803.325.0	803.332.0	-	-	-

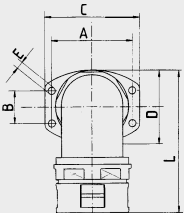
## ISO cable-hose-fitting, male, IP 65



ISO thread size		M10x1,0	M12x1,5	M16x1,5	M16x1,5	M20x1,5	M25x1,5	M32x1,5	M40x1,5	M50x1,5	M63x1,5
For Ana-Quick	NW	-	-	10	12	17	23	29	-	-	-
Cable min - max	mm	-	-	4-10	4-10	7-14	9-16	10-21	-	-	-
Dimensions in mm	GL	-	-	8	8	9	10	10	-	-	-
	SW	-	-	19	21	27	36	40	-	-	-
	A	-	-	22	23	29	39	44	-	-	-
Standard pack.	pcs.	-	-	50	50	50	50	25	-	-	-
Article No. grey		-	-	805.016.1	805.016.0	805.020.0	805.025.0	805.032.0	-	-	-
Article No. black		-	-	805.116.1	805.116.0	805.120.0	805.125.0	805.132.0	-	-	-



## Flange model 90° elbow, fixed, IP 65



Connection size		-	NW 10	NW 10	NW 12	NW 17	NW 23	NW 29	NW 37	NW 50	NW 50
For Ana-Quick	NW	-	-	-	-	17	23	29	37	50	-
Bore (DI)	mm	-	-	-	-	16,4	22,8	27,0	38,3	47,7	-
Dimensions in mm	A	-	-	-	-	36	53	54	73	73	-
	B	-	-	-	-	-	-	36	30	30	-
	C	-	-	-	-	46	63	67	86	86	-
	E	-	-	-	-	5,5	6,5	6,5	6,5	6,5	-
Standard pack.	pcs.	-	-	-	-	50	50	25	25	10	-
Article No. grey		-	-	-	-	808.416.0	808.421.0	808.429.0	808.436.0	808.448.0	-
Article No. black		-	-	-	-	808.516.0	808.521.0	808.529.0	808.536.0	808.548.0	-

### ANA-QUICK fittings for Polyamide conduit

These IP 65 straight and 90° fittings have a temperature range of -40°C till +110°C. Material: PA6V0. The cable-hose-version has a temperature range of -20°C till +100°C. Material: PA6V2. In case of the cable-hose-fitting an IP 68 connection on the switchbox is possible. Anaconda ISO fittings are limited available from stock, for larger volumes please notice a delivery time of 4 till 6 weeks.

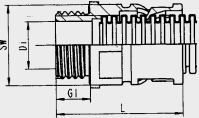
# ANA - QUICK FITTINGS PA6, ISO



Trade size	mm	7,5	10	10	12	17	23	29	37	50	50
Fittings	ISO	M10	M12	M16	M16	M20	M25	M32	M40	M50	M63
	PG	7	9	-	11	16	21	29	36	48	-



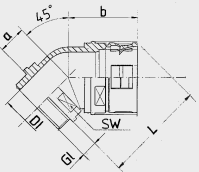
## ISO straight fitting, male, nickel plated thread, IP 65



ISO thread size		M10x1,0	M12x1,5	M16x1,5	M16x1,5	M20x1,5	M25x1,5	M32x1,5	M40x1,5	M50x1,5	M63x1,5
For Ana-Quick	NW	-	10	10	12	17	23	29	37	50	50
Bore (DI)	mm	-	6,8	10,0	10,3	14,6	18,6	24,0	32,2	41,6	47,0
Dimensions in mm	GL	-	10	10	10	12	15	15	16	16	16
	SW	-	19	19	21	27	36	40	50	65	65
	L	-	33	35	37	42	48	53	59	65	65
Standard pack.	pcs.	-	50	50	50	50	50	25	25	10	5
Article No. grey		-	807.012.0	807.016.1	807.016.0	807.020.0	807.025.0	807.032.0	807.040.0	807.050.0	807.063.0
Article No. black		-	807.112.0	807.116.1	807.116.0	807.120.0	807.125.0	807.132.0	807.140.0	807.150.0	807.163.0



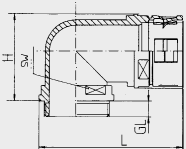
## ISO 45° elbow fitting, male, nickel plated thread, IP 65



ISO thread size		M10x1,0	M12x1,5	M16x1,5	M16x1,5	M20x1,5	M25x1,5	M32x1,5	M40x1,5	M50x1,5	M63x1,5
For Ana-Quick	NW	-	-	-	-	-	23	29	37	50	50
Bore (DI)	mm	-	-	-	-	-	19,0	23,8	32,0	41,5	47,0
Dimensions in mm	GL	-	-	-	-	-	15	15	16	16	16
	SW	-	-	-	-	-	36	40	50	65	65
	L	-	-	-	-	-	64	76	88	95	95
Standard pack.	pcs.	-	-	-	-	-	50	25	25	10	5
Article No. grey		-	-	-	-	-	807.425.0	807.432.0	807.440.0	807.450.0	807.463.0
Article No. black		-	-	-	-	-	807.525.0	807.532.0	807.540.0	807.550.0	807.563.0



## ISO 90° elbow fitting, male, nickel plated thread, IP 65



ISO thread size		M10x1,0	M12x1,5	M16x1,5	M16x1,5	M20x1,5	M25x1,5	M32x1,5	M40x1,5	M50x1,5	M63x1,5
For Ana-Quick	NW	-	10	10	12	17	23	29	37	50	50
Bore (DI)	mm	-	6,9	10,1	10,5	15,0	18,0	23,7	32,5	37,7	47,0
Dimensions in mm	GL	-	10	10	10	12	15	15	16	16	16
	SW	-	19	19	21	27	36	40	50	65	65
	L	-	45	45	50	59	78	88	103	126	128
	H	-	27	27	30	35	44	52	66	82	85
Standard pack.	pcs.	-	50	50	50	50	50	25	25	10	5
Article No. grey		-	807.812.0	807.816.1	807.816.0	807.820.0	807.825.0	807.832.0	807.840.0	807.850.0	807.863.0
Article No. black		-	807.912.0	807.916.1	807.916.0	807.920.0	807.925.0	807.932.0	807.940.0	807.950.0	807.963.0

### ANA-QUICK fittings for Polyamide conduit

These IP 65 straight, 45° and 90° fittings have a temperature range of -40°C till +110°C. Material: PA6V0. Ana-Quick ISO fittings, with nickel plated thread, are not available from stock, please notice a delivery time (on request). Also available but not mentioned are PG, IP65, straight, 45° and 90° fittings with nickel plated thread and EMC/EMP connections.

# ANA-QUICK ACCESSORIES PA6, ISO

Trade size	mm	7,5	10	12	17	23	29	37	50	50
Fittings	ISO	M10	M12	M16	M20	M25	M32	M40	M50	M63
	PG	7	9	11	16	21	29	36	48	-

## ISO locknut, glassfibre reinforced polyamide



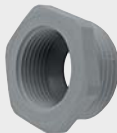
ISO thread		M10x1,5	M12x1,5	M16x1,5	M20x1,5	M25x1,5	M32x1,5	M40x1,5	M50x1,5	M63x1,5
Standard pack.	pcs.	50	50	50	50	20	20	20	10	5
Article No. grey		798.310.0	798.312.0	798.316.0	798.320.0	798.325.0	798.332.0	798.340.0	798.350.0	798.363.0
Article No. black		798.310.3	798.312.3	798.316.3	798.320.3	798.325.3	798.332.3	798.340.3	798.350.3	798.363.3

## ISO locknut, nickel plated brass



ISO thread		-	M12x1,5	M16x1,5	M20x1,5	M25x1,5	M32x1,5	M40x1,5	M50x1,5	M63x1,5
Dimension SW	mm	-	15	20	24	30	35	45	55	70
Standard pack.	pcs.	-	50	50	50	25	20	10	10	5
Article No.		-	880.112.0	880.116.0	880.120.0	880.125.0	880.132.0	880.140.0	880.150.0	880.163.0

## ISO reducer, glassfibre reinforced polyamide



ISO thread outside		-	-	M16x1,5	M20x1,5	M25x1,5	M32x1,5	M40x1,5	M50x1,5	M63x1,5
ISO thread inside		-	-	M12x1,5	M16x1,5	M20x1,5	M25x1,5	M32x1,5	M40x1,5	M50x1,5
Standard pack.	pcs.	-	-	50	50	50	20	20	10	5
Article No. grey		-	-	266.416.0	266.420.0	266.425.0	266.432.0	266.440.0	266.450.0	266.463.0

## ISO enlarger, glassfibre reinforced polyamide



ISO thread outside		-	M12x1,5	M16x1,5	M20x1,5	M25x1,5	M32x1,5	M40x1,5	M50x1,5	-
ISO thread inside		-	M16x1,5	M20x1,5	M25x1,5	M32x1,5	M40x1,5	M50x1,5	M63x1,5	-
Standard pack.	pcs.	-	50	50	50	20	20	20	10	-
Article No. grey		-	266.512.0	266.516.0	266.520.0	266.525.0	266.532.0	266.540.0	266.550.0	-

## PG-ISO adapter, glassfibre reinforced polyamide



PG thread outside		-	-	16	21	21	29	-	-	-
ISO thread inside		-	-	M20x1,5	M20x1,5	M25x1,5	M25x1,5	-	-	-
Standard pack.	pcs.	-	-	50	50	50	25	-	-	-
Article No. grey		-	-	266.316.0	266.321.0	266.322.0	266.329.0	-	-	-

## ISO plug, round, glassfibre reinforced polyamide



ISO thread		-	M12x1,5	M16x1,5	M20x1,5	M25x1,5	M32x1,5	M40x1,5	M50x1,5	M63x1,5
Dimension SW	mm	-	-	-	-	-	-	-	-	-
Standard pack.	pcs.	-	50	50	50	20	20	20	10	5
Article No. grey		-	266.612.0	266.616.0	266.620.0	266.625.0	266.632.0	266.640.0	266.650.0	266.663.0

### Accessories for fittings for Ana-Quick polyamide conduit

Above mentioned accessories have a temperature range of -30°C till +120°C. Material: Polyamide PA6 in combination with glassfibre 25%. All articles are no stock item and have a delivery time of 2 till 3 weeks.

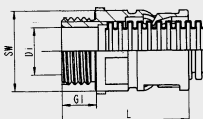
# ANA - QUICK FITTINGS PA6, PG



Trade size	mm	7,5	10	12	17	17	23	29	37	50	50
Fittings	ISO	M10	M12	M16	-	M20	M25	M32	M40	M50	M63
	PG	7	9	11	13,5	16	21	29	36	48	-



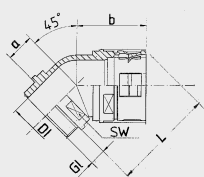
## PG straight fitting, male, IP 65



PG thread size		7	9	11	13,5	16	21	29	36	48	-
For Ana-Quick	NW	7,5	10	12	17	17	23	29	37	50	-
Bore (DI)	mm	8,5	10,5	13,0	14,9	16,5	23,1	29,2	37,5	49,1	-
Dimensions in mm	GL	7	8	8	10	10	12	12	15	15	-
	SW	14	19	21	27	27	36	40	50	65	-
	L	24	28	31	36	36	41	43	54	58	-
Standard pack.	pcs.	50	50	50	50	50	50	25	25	10	-
Article No. grey		804.007.0	804.009.0	804.011.0	804.013.0	804.016.0	804.021.0	804.029.0	804.036.0	804.048.0	-
Article No. black		804.107.0	804.109.0	804.111.0	804.113.0	804.116.0	804.121.0	804.129.0	804.136.0	804.148.0	-



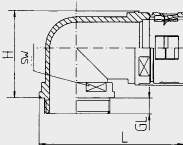
## PG 45° elbow fitting, male, IP 65



PG thread size		7	9	11	13,5	16	21	29	36	48	-
For Ana-Quick	NW	-	-	-	-	-	23	29	37	50	-
Bore (DI)	mm	-	-	-	-	-	22,5	27,0	39,0	48,0	-
Dimensions in mm	GL	-	-	-	-	-	12	12	16	16	-
	SW	-	-	-	-	-	36	40	50	65	-
	L	-	-	-	-	-	64	75	87	96	-
Standard pack.	pcs.	-	-	-	-	-	50	25	25	10	-
Article No. grey		-	-	-	-	-	804.421.0	804.429.0	804.436.0	804.448.0	-
Article No. black		-	-	-	-	-	804.521.0	804.529.0	804.536.0	804.548.0	-



## PG 90° elbow fitting, male, IP 65



PG thread size		7	9	11	13,5	16	21	29	36	48	-
For Ana-Quick	NW	7,5	10	12	17	17	23	29	37	50	-
Bore (DI)	mm	-	10,2	12,0	15,7	15,7	22,7	26,6	37,8	47,7	-
Dimensions in mm	GL	-	9	8	10	10	12	12	16	16	-
	SW	-	19	21	27	27	36	40	50	65	-
	L	-	45	50	59	59	78	88	103	126	-
	H	-	27	30	35	35	44	52	67	82	-
Standard pack.	pcs.	-	50	50	50	50	50	25	25	10	-
Article No. grey		-	804.809.0	804.811.0	804.813.0	804.816.0	804.821.0	804.829.0	804.836.0	804.848.0	-
Article No. black		-	804.909.0	804.911.0	804.913.0	804.916.0	804.921.0	804.929.0	804.936.0	804.948.0	-

### ANA-QUICK fittings for Polyamide conduit

These IP 65 straight, 45° and 90° fittings have a temperature range of -40°C till +110°C. Material: PA6V0. Not mentioned but also available is a straight male PG 9 for conduit NW 7,5. Anaconda PG fittings are available from stock, for larger volumes please notice a delivery time of 3 till 4 weeks.

# ANA-QUICK ACCESSORIES PA6, ISO

Trade size	mm	7,5	10	12	17	23	29	37	50	50
Fittings	ISO	M10	M12	M16	M20	M25	M32	M40	M50	M63
	PG	7	9	11	16	21	29	36	48	-

## PG locknut, glassfibre reinforced polyamide



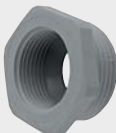
PG thread		7	9	11	16	21	29	36	48	-
Standard pack.	pcs.	50	50	50	50	20	20	10	5	-
Article No. grey		269.907.0	269.909.0	269.911.0	269.916.0	269.921.0	269.929.0	269.936.0	269.948.0	-
Article No. black		269.907.3	269.909.3	269.911.3	269.916.3	269.921.3	269.929.3	269.936.3	269.948.3	-

## PG locknut, nickel plated brass



PG thread		7	9	11	16	21	29	36	48	-
Dimension SW	mm	15	18	21	26	32	41	51	64	-
Standard pack.	pcs.	100	100	100	100	100	100	50	50	-
Article No.		880.007.0	880.009.0	880.011.0	880.016.0	880.021.0	880.029.0	880.036.0	880.048.0	-

## PG reducer, glassfibre reinforced polyamide



PG thread outside		-	9	11	16	21	29	36	42	48
PG thread inside		-	7	9	11	16	21	29	36	42
Standard pack.	pcs.	-	100	100	100	100	50	50	25	25
Article No. grey		-	266.109.0	266.111.0	266.116.0	266.121.0	266.129.0	266.236.0	266.242.0	266.248.0

## PG enlarger, glassfibre reinforced polyamide



PG thread outside		7	9	11	16	21	29	36	42	-
PG thread inside		9	11	16	21	29	36	42	48	-
Standard pack.	pcs.	100	100	100	100	50	25	10	10	-
Article No. grey		266.207.0	266.209.0	266.211.0	266.216.0	266.221.0	266.229.0	266.236.0	266.242.0	-

## Neoprene end-sleeve, with traction relieve, IP 54



For Ana-quick	NW	-	-	12	17	23	29	37	50	-
Cable min-max	mm	-	-	4-9	5-12	7-17	9-20	16-30	23-40	-
Standard pack.	pcs.	-	-	3000	2400	1200	800	800	500	-
Article No. black		-	-	266.812.0	266.817.0	266.823.0	266.829.0	266.836.0	266.842.0	-

## PG plug, round, glassfibre reinforced polyamide



PG thread		7	9	11	16	21	29	36	48	-
Dimension SW	mm	-	-	-	-	-	-	-	-	-
Standard pack.	pcs.	100	100	100	100	100	50	50	50	-
Article No. grey		266.707.0	266.709.0	266.711.0	266.716.0	266.721.0	266.729.0	266.736.0	266.748.0	-

### Accessories for fittings for Ana-Quick polyamide conduit

Above mentioned accessories have a temperature range of -30°C till +120°C. Material: Polyamide PA6 in combination with glassfibre 25%. All articles are no stock item and have a delivery time of 2 till 3 weeks.

# ANA-QUICK ACCESSORIES, PA6

Trade size	mm	7,5	10	12	17	23	29	37	50	50
Fittings	ISO	M10	M12	M16	M20	M25	M32	M40	M50	M63
	PG	7	9	11	16	21	29	36	48	-

## Conduit saddle, without cover, for ANA-QUICK conduit



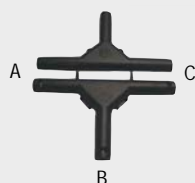
Ana-Quick conduit NW		NW 7	NW 10	NW 12	NW 17	NW 23	NW 29	NW 37	NW 50	-
Standard pack.	pcs.	50	50	50	50	50	50	50	50	-
Article No. grey		809.407.0	809.410.0	809.412.0	809.417.0	809.423.0	809.429.0	809.436.0	809.448.0	-
Article No. black		809.507.0	809.510.0	809.512.0	809.517.0	809.523.0	809.529.0	809.536.0	809.548.0	-

## Cover, for conduit saddle, for ANA-QUICK conduit



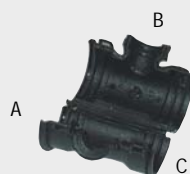
Ana-Quick conduit NW		7,5	10	12	17	23	29	37	50	-
Standard pack.	pcs.	50	50	50	50	50	50	50	50	-
Article No. grey		809.607.0	809.610.0	809.612.0	809.617.0	809.623.0	809.629.0	809.636.0	809.648.0	-
Article No. black		809.707.0	809.710.0	809.712.0	809.717.0	809.723.0	809.729.0	809.736.0	809.748.0	-

## T - joint, conduit at outside connected, IP 40



Type		-	10-10-10	17-17-10	17-17-17	23-23-10	23-23-17	23-23-23	-	-
Ana-quick size A	NW	-	10	17	17	23	23	23	-	-
Ana-quick size B	NW	-	10	17	17	23	23	23	-	-
Ana-quick size C	NW	-	10	10	17	10	17	23	-	-
Standard pack.	pcs.	-	100	100	100	100	100	100	-	-
Article No. black		-	799.801.0	799.802.0	799.803.0	799.804.0	799.805.0	799.806.0	-	-

## T - joint, conduit at inside connected, IP 40



Type		7-7-7	10-10-10	12-10-10	12-10-12	12-12-10	12-12-12	17-12-12	17-12-17	23-23-23
Ana-quick size A	NW	7,5	10	12	12	12	12	17	17	23
Ana-quick size B	NW	7,5	10	10	10	12	12	12	12	23
Ana-quick size C	NW	7,5	10	10	12	10	12	12	17	23
Standard pack.	pcs.	10	10	10	10	10	10	10	10	10
Article No. black		799.601.0	799.605.0	799.606.0	799.607.0	799.608.0	799.609.0	799.610.0	799.611.0	799.616.0

## Y - joint, conduit at outside connected, IP 40



Type		7-7-7	10-10-10	12-10-12	12-12-12	17-12-17	17-17-10	23-17-17	23-23-23	-
Ana-quick size A	NW	7,5	10	12	12	17	17	23	23	-
Ana-quick size B	NW	7,5	10	10	12	12	17	17	23	-
Ana-quick size C	NW	7,5	10	12	12	17	10	17	23	-
Standard pack.	pcs.	500	500	500	500	500	500	500	250	-
Article No. black		799.901.0	799.902.0	799.903.0	799.904.0	799.905.0	799.906.0	799.907.0	799.908.0	-

## Y - joint, conduit at inside connected, IP 40



Type		7-7-7	10-10-10	12-10-10	12-12-10	12-12-12	17-12-17	23-17-12	23-23-23	-
Ana-quick size A	NW	7,5	10	12	12	12	17	23	23	-
Ana-quick size B	NW	7,5	10	10	12	12	12	17	23	-
Ana-quick size C	NW	7,5	10	10	10	12	17	12	23	-
Standard pack.	pcs.	10	10	10	10	10	10	10	10	-
Article No. black		799.701.0	799.705.0	799.706.0	799.708.0	799.709.0	799.711.0	799.714.0	799.716.0	-

### Accessories for Ana-Quick polyamide conduit

The Ana-quick conduit holders and covers have a temperature range of -40°C till +110°C. Material: Polyamide PA6V0. The conduit T-Y joints have a temperature range of -40°C till +130°C. Material PA 6. Conduit holders are stock item, all other articles are no stock item and have a delivery time of 2 till 3 weeks.