

Serie Steel

BS2000

Cable Chains in Bright Zinc Plated Steel

Inner height (D) 32 mm

Chain with side bands in bright zinc plated steel.⁽¹⁾

Aluminium split cross pieces created by design or aluminium draw plates with movable separators in nylon.

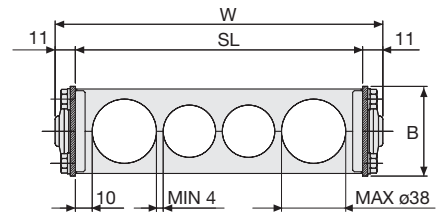
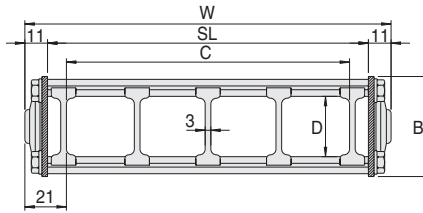
Inner width (C) can be supplied with special dimension.

⁽¹⁾ Available on request in stainless steel.

Technical characteristics when self-supported

Speed	0,5 m/s
Acceleration	2 m/s ²

For higher requirements please consult our technical dept.



Separator

- Unassembled Part. no S306CO
- Assembled Part. no S306COMC

Aluminium Draw Plates with Separators in Nylon

W	B	C	D	R	Weight/m	Chain
mm	mm	mm	mm	mm	kg	Part Number
117	53	75	32	075-115-150-205-250-305	11,40	2000T075□□□□*
142	53	100	32	075-115-150-205-250-305	11,50	2000T100□□□□*
192	53	150	32	075-115-150-205-250-305	11,80	2000T150□□□□*
242	53	200	32	075-115-150-205-250-305	12,10	2000T200□□□□*
292	53	250	32	075-115-150-205-250-305	12,35	2000T250□□□□*
342	53	300	32	075-115-150-205-250-305	12,60	2000T300□□□□*
C+42	53	...	32	075-115-150-205-250-305		2000T□□□□□□**

* Complete the code by inserting the value of the radius (R): Ex. 2000T150 □□□□□

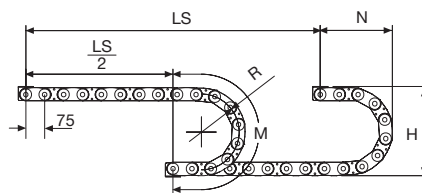
** Complete the code by inserting the value of the quote C and the radius (R): Ex. 2000T □□□□□□□□□□

Chain equipped with aluminium draw plates every pitch: complete the code by inserting the letter D. Ex. 2000T150250□□

Aluminium Split Cross Piece Created by Design

W	B	R	Chain
mm	mm	mm	Part Number
SL+22	53	075-115-150-205-250-305	2000TL□□□□□□***

*** Complete the code by inserting the value SL and the radius (R): Ex. 2000TL □□□□□□□□□□



R	H*	N	M
mm	mm	mm	mm
075	214	180	390
115	294	220	515
150	364	255	625
205	474	310	795
250	564	360	940
305	674	410	1110

* The total space taken in height may vary in relationship to the pre-set up to 10 mm/m.

Length of chain (L)

Half travel distance ($\frac{LS}{2}$)

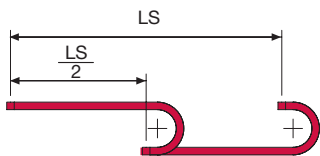
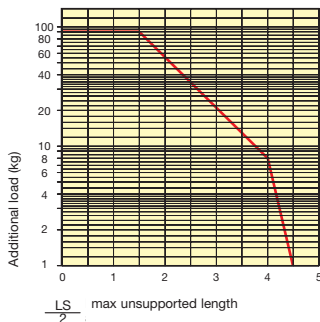
plus length of curve (M)

$$L = \frac{LS}{2} + M$$



Self-Supporting Capacity Diagram

The maximum length of the self-supporting capacity ($\frac{LS}{2}$) in relationship to the weight of the cables and hoses contained per linear metre.



For applications with $\frac{LS}{2}$ and weights not included in the area of the diagram showing self-supporting capacity, verify the possible use of support rollers (see page 30).

Bright Zinc Plated Steel End Brackets

The end brackets set, containing four steel plates screwed to the links, allows the two ends of the chain to be attached to the equipment.

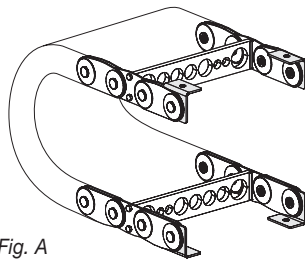
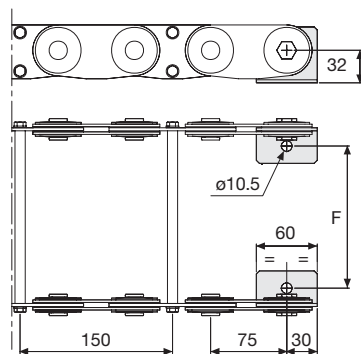


Fig. A
End brackets can be mounted in any position. (Fig. A)



Chain	F
	mm
BS2000T075	65
BS2000T100	90
BS2000T150	140
BS2000T200	190
BS2000T250	240
BS2000T300	290
Special dimension F=W-52	

Bright Zinc Plated Steel End Brackets Part Number

Complete Set Assembled

Chain Type	End Brackets Set
BS2000...	A2000KM

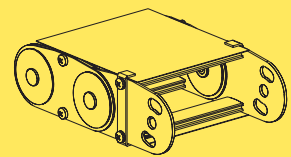
Complete Set Unassembled

BS2000...	A2000K
-----------	--------

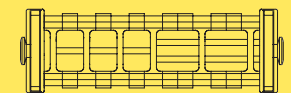
Serie Steel

BS2000

Cable Chains in Bright Zinc Plated Steel



Steel laminar cover.



Supplementary movable separators.