

Serie Steel

BS3000

Cable Chains in Bright Zinc Plated Steel

Inner height (D) 52 mm

Chain with side bands in bright zinc plated steel.⁽¹⁾

Aluminium split cross pieces created by design or aluminium draw plates with movable separators in nylon.

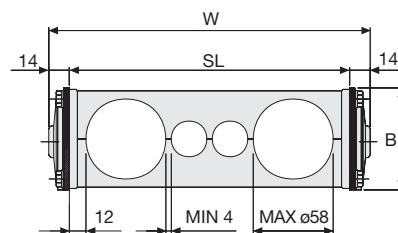
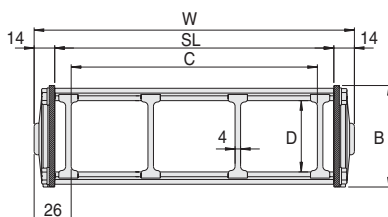
Inner width (C) can be supplied with special dimension.

⁽¹⁾ Available on request in stainless steel.

Technical characteristics when self-supported

Speed	0,5 m/s
Acceleration	2 m/s ²

For higher requirements please consult our technical dept.



Separator

- Unassembled Part. no S308CO
- Assembled Part. no S308COMC

Aluminium Draw Plates with Separators in Nylon

W	B	C	D	R	Weight/m	Chain
mm	mm	mm	mm	mm	kg	Part Number
152	74	100	52	150-220-250-305-400-535	16,50	3000T100 □□□□*
202	74	150	52	150-220-250-305-400-535	17,00	3000T150 □□□□*
252	74	200	52	150-220-250-305-400-535	17,30	3000T200 □□□□*
302	74	250	52	150-220-250-305-400-535	17,80	3000T250 □□□□*
352	74	300	52	150-220-250-305-400-535	18,30	3000T300 □□□□*
C+52	74	...	52	150-220-250-305-400-535		3000T □□□□□□**

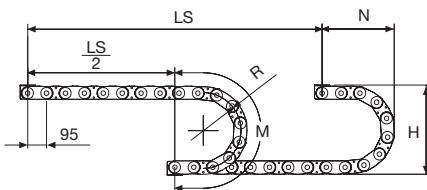
* Complete the code by inserting the value of the radius (R): Ex. 3000T150 [2][5][0]

** Complete the code by inserting the value of the quote C and the radius (R): Ex. 3000T [7][2][3][2][5][0]
Chain equipped with aluminium draw plates every pitch: complete the code by inserting the letter D.
Ex. 3000T150250 [0]

Aluminium Split Cross Piece Created by Design

W	B	R	Chain
mm	mm	mm	Part Number
SL+28	74	150-220-250-305-400-535	3000TL □□□□□□***

*** Complete the code by inserting the value SL and the radius (R): Ex. 2000TL [7][5][0][2][5][0]



R	H*	N	M
mm	mm	mm	mm
150	388	290	670
220	528	360	890
250	588	385	980
305	698	440	1150
400	888	540	1450
535	1158	675	1880

* The total space taken in height may vary in relationship to the pre-set up to 10 mm/m.

Length of chain (L)

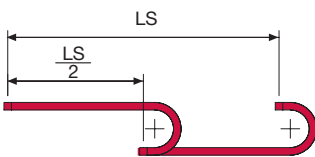
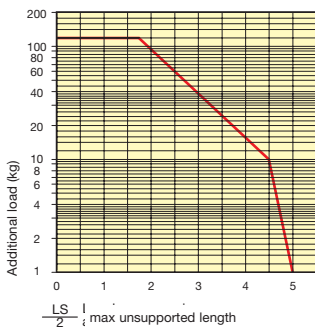
Half travel distance ($\frac{LS}{2}$)
plus length of curve (M)

$$L = \frac{LS}{2} + M$$



Self-Supporting Capacity Diagram

The maximum length of the self-supporting capacity ($\frac{LS}{2}$) in relationship to the weight of the cables and hoses contained per linear metre.



For applications with $\frac{LS}{2}$ and weights not included in the area of the diagram showing self-supporting capacity, verify the possible use of support rollers (see page 30).

Bright Zinc Plated Steel End Brackets

The end brackets set, containing four steel plates screwed to the links, allows the two ends of the chain to be attached to the equipment.

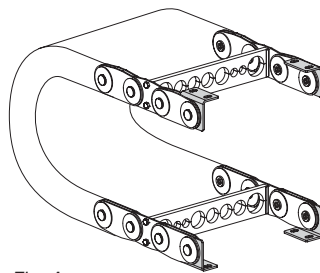
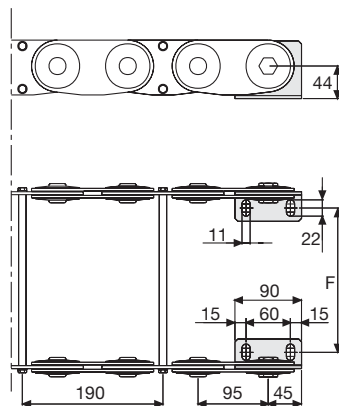


Fig. A

Chain fixed outside the radius. (Fig. A)
See end brackets mounting variations.



Chain	F
	mm
BS3000T100	88
BS3000T150	138
BS3000T200	188
BS3000T250	238
BS3000T300	288
Special dimension F=W-64	

Bright Zinc Plated Steel End Brackets Part Number

Complete Set Assembled

Chain Type	End Brackets Set
BS3000...	A3000KM

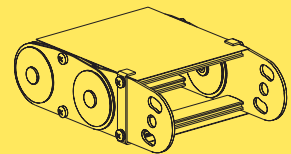
Complete Set Unassembled

BS3000...	A3000K
-----------	--------

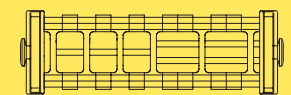
Serie Steel

BS3000

Cable Chains in Bright Zinc Plated Steel



Steel laminar cover.



Supplementary movable separators.