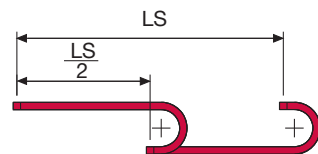
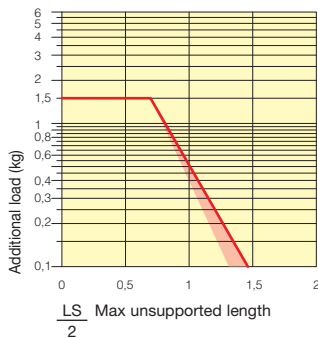


Self-Supporting Capacity Diagram

The maximum length of the self-supporting capacity ($\frac{LS}{2}$) in relationship to the weight of the cables and hoses contained per linear metre.



The red marking in the diagram area considers the difference of weight between various widths of chain.

For applications with $\frac{LS}{2}$ and weights not included in the area of the diagram showing self-supporting capacity, verify the possible use of support rollers (see page 30).

Bright Zinc Plated Steel End Brackets*

The end brackets set allows the two ends of the chain to be attached to the equipment.

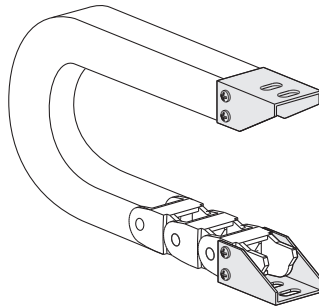
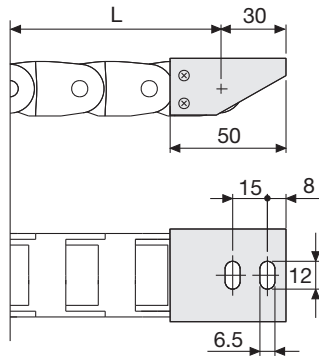


Fig. A
Chain fixed outside the radius. (Fig A)
See end brackets mounting variations page 31.



Bright Zinc Plated Steel Type Part Numbers

| Complete Set Assembled | |
|------------------------|--------------|
| Chain | End Brackets |
| Type | Set |
| SR30090 | A30090KM □** |
| SR30091 | A30091KM □** |
| SR30091S | A30091KM □** |
| SR30092 | A30092KM □** |

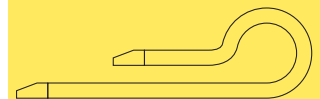
| Complete Set Unassembled | |
|--------------------------|--------------|
| Chain | End Brackets |
| Type | Set |
| SR30090 | A30090K □** |
| SR30091 | A30091K □** |
| SR30091S | A30091K □** |
| SR30092 | A30092K □** |

*Available on request in stainless steel
** 1=Pos.1; 2=Pos.2; 3=Pos.3
See end brackets mounting variations page 31.

Serie Light

SR30090
SR30091
SR30092
Nylon Cable Chain

3



Suitable to long travel distance.
To choose the guide channel see page 50

For further information please consult Brevetti Stendalto's Technical Office