

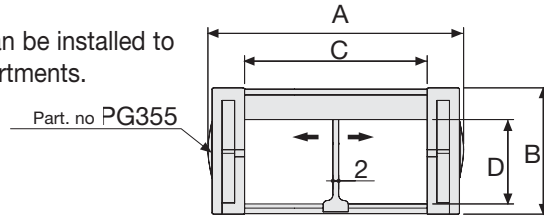
Serie Medium

SR355 Nylon Cable Chain

Inner height (D) 30 mm

Construction by single link with antifriction pivot.

Movable separators can be installed to create different compartments.



Separator

- Unassembled	Part. no S355
- Assembled	Part. no S355MC

Technical characteristics when self-supported

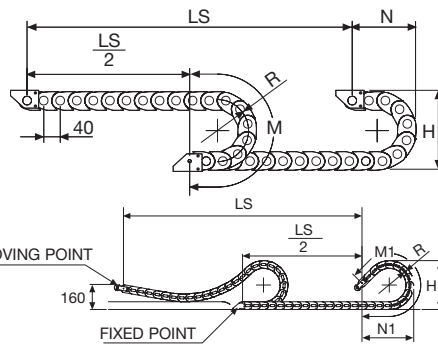
Speed	10 m/s
Acceleration	50 m/s ²

Technical characteristics when used in long travel distance

Speed	0,5 m/s
Acceleration	1 m/s ²

For higher requirements please consult our technical dept.

A	B	C	D	R	Weight/m	Chain
mm	mm	mm	mm	mm	kg	Part Number
74	45	45	30	75	1,35	SR355045
74	45	45	30	100	1,35	SR355046
74	45	45	30	150	1,35	SR355047
74	45	45	30	200	1,35	SR355048
94	45	65	30	75	1,45	SR355065
94	45	65	30	100	1,45	SR355066
94	45	65	30	150	1,45	SR355067
94	45	65	30	200	1,45	SR355068
124	45	95	30	75	1,65	SR355095
124	45	95	30	100	1,65	SR355096
124	45	95	30	150	1,65	SR355097
124	45	95	30	200	1,65	SR355098



R	H	N	M	N1	M1
mm	mm	mm	mm	mm	mm
75	195	140	315	150	410
100	245	165	395	230	630
150	345	215	555	400	1070
200	445	265	710	570	1500

Length of chain (L)

Half travel distance ($\frac{LS}{2}$)

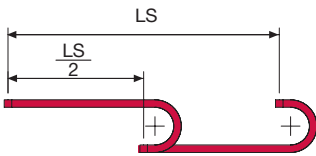
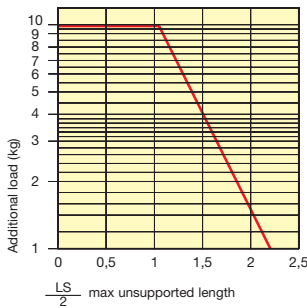
plus length of curve (M) or (M1)

$$L = \frac{LS}{2} + M \text{ or } M1$$



Self-Supporting Capacity Diagram

The maximum length of the self-supporting capacity ($\frac{LS}{2}$) in relationship to the weight of the cables and hoses contained per linear metre.



For applications with $\frac{LS}{2}$ and weights not included in the area of the diagram showing self-supporting capacity, verify the possible use of support rollers (see page 30).

End Brackets

The end brackets set allows the two ends of the chain to be attached to the equipment.

Nylon Type

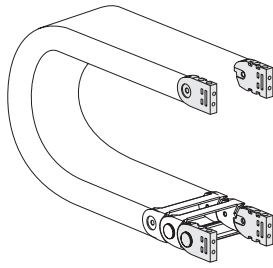


Fig. A

End brackets can be mounted in any position. (Fig. A)
See end brackets mounting variations: page 31.

Bright Zinc Plated Steel Type*

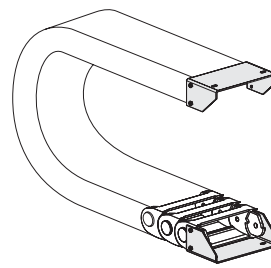
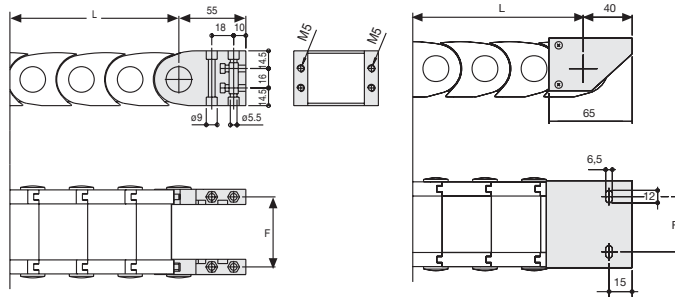


Fig. B

End brackets can be mounted in any position. (Fig. B)
See end brackets mounting variations: page 31.



Chain	F
	mm
SR355 C=45	57
SR355 C=65	77
SR355 C=95	107

Chain	F
	mm
SR355 C=45	50
SR355 C=65	70
SR355 C=95	100

Nylon Type Part Numbers

Complete Set Assembled

Chain Type	End Brackets Set
SR355 C=45	AN355KM
SR355 C=65	AN355KM
SR355 C=95	AN355KM

Complete Set Unassembled

Chain Type	End Brackets Set
SR355 C=45	AN355K
SR355 C=65	AN355K
SR355 C=95	AN355K

Bright Zinc Plated Steel Type Part Numbers

Complete Set Assembled

Chain Type	End Brackets Set
SR355 C=45	AP355KM □**
SR355 C=65	AM355KM □**
SR355 C=95	AG355KM □**

Complete Set Unassembled

Chain Type	End Brackets Set
SR355 C=45	AP355K □**
SR355 C=65	AM355K □**
SR355 C=95	AG355K □**

* Available on request in stainless steel
** 1=pos. 1; 2=pos.2; 3=pos.3
See end brackets mounting variations page 31.

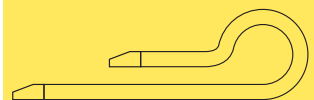
Serie Medium

SR355

Nylon Cable Chain



Special tool to remove the connecting pivots: part number PZ010.



Suitable to long travel distance. To choose the guide channel see page 78.

For further information please consult Brevetti Stendalto's Technical Office