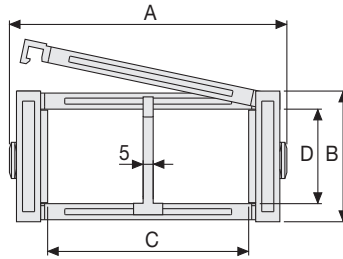


Serie Medium

SR475MI/SR475ME Nylon Cable Chain with openable frames

Inner height (D) 75,5 mm

Sideband & Frame construction with large anti-friction single-pin.
Frames are openable from inner radius (SR475MI) or from outer radius (SR475ME).
Vertical and horizontal modular separator system is available.



Separator

- Unassembled	Part.no S309S
- Assembled	Part.no S309SMC

Pin

Part.no PG475

Technical characteristics when self-supported

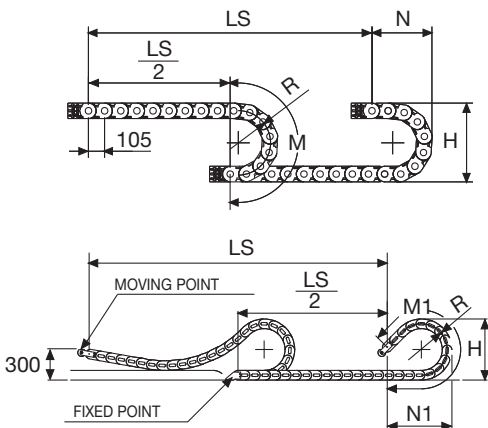
Speed	8 m/s
Acceleration	40 m/s ²

For higher requirements please consult our technical dept.

For sliding applications, technical data can slightly change according to frequency, added weight and environment.

A	B	C	D	R	Weight/m	Chain
mm	mm	mm	mm	mm	kg	Part Number
112	100,5	74	75,5	150-180-200-250-300-350-400	3,70	SR475MI(ME)074□□□*
132	100,5	94	75,5	150-180-200-250-300-350-400	3,80	SR475MI(ME)094□□□*
157	100,5	119	75,5	150-180-200-250-300-350-400	3,85	SR475MI(ME)119□□□*
164	100,5	126	75,5	150-180-200-250-300-350-400	3,90	SR475MI(ME)126□□□*
187	100,5	149	75,5	150-180-200-250-300-350-400	3,95	SR475MI(ME)149□□□*
227	100,5	189	75,5	150-180-200-250-300-350-400	4,05	SR475MI(ME)189□□□*
262	100,5	224	75,5	150-180-200-250-300-350-400	4,15	SR475MI(ME)224□□□*
288	100,5	250	75,5	150-180-200-250-300-350-400	4,25	SR475MI(ME)250□□□*
312	100,5	274	75,5	150-180-200-250-300-350-400	4,30	SR475MI(ME)274□□□*
338	100,5	300	75,5	150-180-200-250-300-350-400	4,37	SR475MI(ME)300□□□*
362	100,5	324	75,5	150-180-200-250-300-350-400	4,45	SR475MI(ME)324□□□*
388	100,5	350	75,5	150-180-200-250-300-350-400	4,55	SR475MI(ME)350□□□*
412	100,5	374	75,5	150-180-200-250-300-350-400	4,60	SR475MI(ME)374□□□*

*Complete the code by inserting the value of the radius (R): Ex. SR475MI(ME)119 □ □ □ □
Chain equipped with nylon frame every pitch: complete the code by inserting the letter D.
Ex. SR475MI(ME)119150 □ □



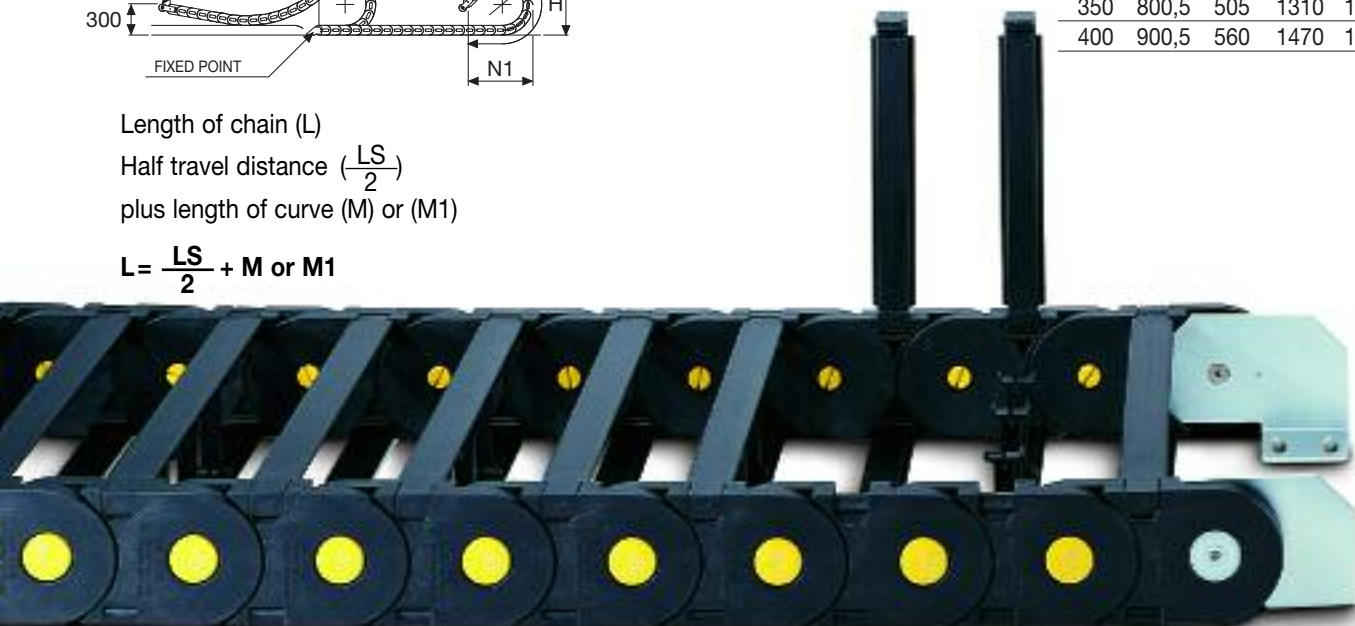
R	H	N	M	N1	M1
mm	mm	mm	mm	mm	mm
150	400,5	310	690	365	805
180	460,5	335	775	420	960
200	500,5	355	840	495	1135
250	600,5	405	995	670	1570
300	700,5	460	1155	845	2010
350	800,5	505	1310	1015	2445
400	900,5	560	1470	1190	2885

Length of chain (L)

Half travel distance ($\frac{LS}{2}$)

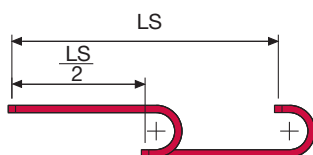
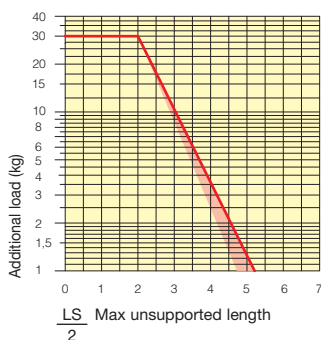
plus length of curve (M) or (M1)

$$L = \frac{LS}{2} + M \text{ or } M1$$



Self-Supporting Capacity Diagram

The maximum length of the self-supporting capacity ($\frac{LS}{2}$) in relationship to the weight of the cables and hoses contained per linear metre.



The red marking in the diagram area considers the difference of weight between various widths of chains assembled with nylon frames every second pitch.

For applications with $\frac{LS}{2}$ and weights not included in the area of the diagram showing self-supporting capacity, verify the possible use of support rollers (see page 30).

Bright Zinc Plated Steel End Brackets*

The end brackets set allows the two ends of the chain to be attached to the equipment.

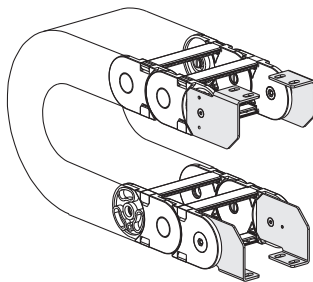
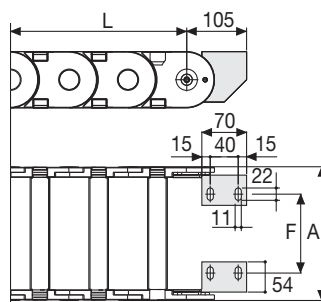


Fig. A
Chain fixed outside the radius. (Fig A)
See end brackets mounting variations page 31.



Chain Type	F mm
SR475MI(ME)074	35
SR475MI(ME)094	55
SR475MI(ME)119	80
SR475MI(ME)126	87
SR475MI(ME)149	110
SR475MI(ME)189	150
SR475MI(ME)224	185
SR475MI(ME)250	211
SR475MI(ME)274	235
SR475MI(ME)300	261
SR475MI(ME)324	285
SR475MI(ME)350	311
SR475MI(ME)374	335

Bright Zinc Plated Steel Type Part Numbers

Complete Set Assembled	
Chain	End Brackets
Type	Set
SR475...	A475M□□□KM□**

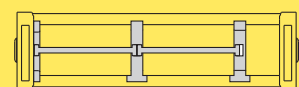
Complete Set Unassembled	
Chain	End Brackets
Type	Set
SR475...	A475M□□□K□**

*Available on request in stainless steel
** 1=Pos.1; 2=Pos.2; 3=Pos.3
See end brackets mounting variations page 31.

Serie Medium

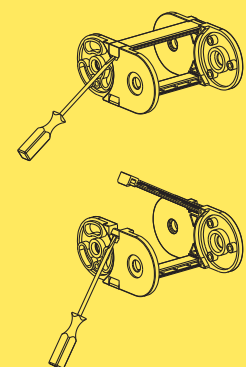
SR475MI SR475ME

Nylon Cable Chain with openable frames

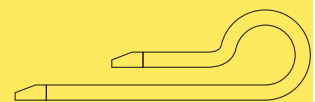


Separation System
To choose the separators see page. 154

3



How to open the cover.



Suitable to long travel distance in frame every pitch version.
To choose the guide channel see page 140

For further information please consult Brevetti Stendalto's Technical Office